

KALOPTICS

- Kaloptics is developing and preparing to launch in 2007 a new and innovative approach to creating photo realistic images onscreen for the benefit of the special effects, animation, gaming and design industries. Delivering visually rich computer generated images by capturing and measuring an object's real life reflectance properties provides a quick and easy way to recreate accurate representations in a fraction of the time and effort of current methods.

□ AT A GLANCE

- Established by ANGLE in 2006
- Based on intellectual property developed by Ken Perlin and Jeff Han at the NYU Media Research Lab
- Applicability in special effects, gaming, animation, and design markets

□ CONTACT DETAILS

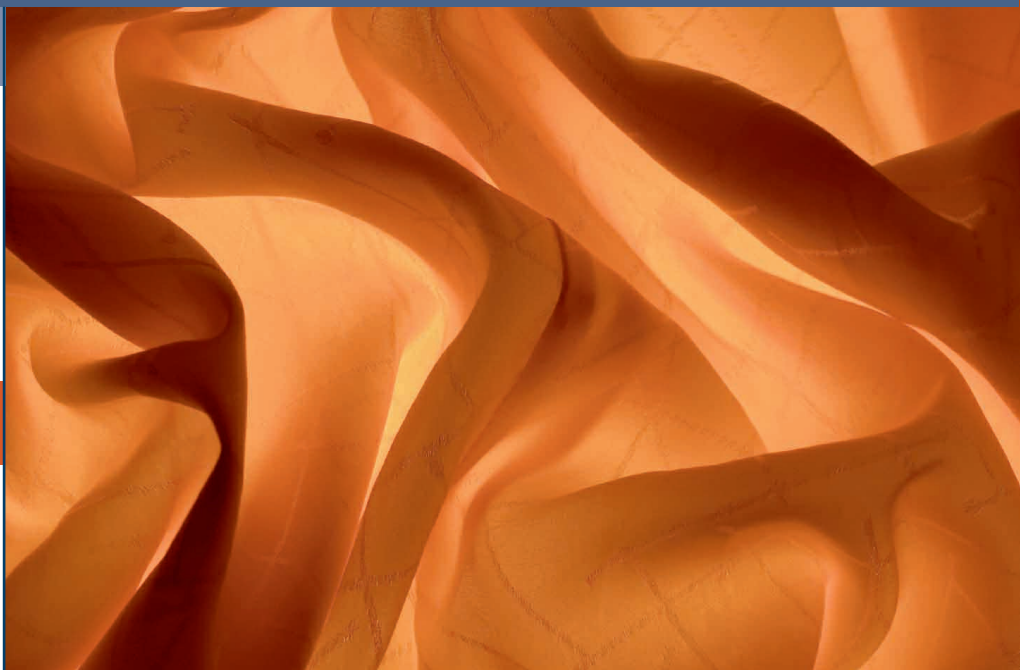
Kaloptics Inc
Saul Orbach
6001 Montrose Rd
Suite 1000
Rockville, MD 20852

T: 1.240.715.3333
T: 1.301.770.1981
E: saul.orbach@angletec.com

□ ABOUT ANGLE

Founded in 1994, ANGLE is an international Consulting, Management and Ventures company focusing on the commercialisation of technology and the development of technology-based industry.

ANGLE Ventures funds, develops and operates its own technology-based businesses. Utilising our in-house Progeny® process, we commercialise intellectual property developed by technology partners in the academic, private and public sectors.



MARKET OPPORTUNITY

Creating, editing, and manipulating photo-realistic surfaces and textures is a necessity in film special effects, computer gaming, animation, design and elsewhere. Doing so today often requires a time-intensive, and often visually inaccurate, process of attempting to recreate an object's real-life reflectance properties.

Kaloptics' patent-pending technology will provide a quick and easy way to acquire and recreate accurate representations of surfaces and textures in a fraction of the time and effort currently required. Kaloptics' technology has a wide range of commercial applications in multi-billion dollar industries, including film special effects, animation, and computer gaming; 3D design including architecture, interior and industrial design for presenting more realistic finished models; fashion design and eCommerce to better represent fabric textures in apparel and furniture, and medical devices.

The current approaches to producing photo realistic images onscreen have not changed in many years, and are cumbersome and time consuming. No method is available today that provides the realism, accuracy, ease of use and speed that Kaloptics' solution will provide.



ANGLE

An ANGLE plc Progeny® Company - generating value from intellectual assets through venture-creation

KALOPTICS



Kaloptics' technology will provide a quick and easy way to acquire and recreate accurate representations of surfaces and textures in a fraction of the time and effort currently required which has a wide range of commercial applications in multi-billion dollar industries

□ KALOPTICS MANAGEMENT

Kaloptics is currently recruiting key staff to lead its commercialisation and licensing process.

Kaloptics was founded in 2006 to commercialise a highly innovative, patent-pending hardware and software system that enables the rapid capture and recreation of photo-realistic textured surface images developed by Dr Ken Perlin and Jeff Han of New York University's Media Research Lab. Perlin is a professor in the Department of Computer Science at New York University, the founding director of its Media Research Lab (MRL), a prolific inventor, and the winner of an Academy Award for Technical Achievement for motion picture visual effects. Han is a long time researcher and prolific inventor who works closely with Perlin at the MRL. This patent-pending solution is a significant advancement over previous technologies in the speed and accuracy of data acquisition, which allows for greater productivity while reducing cost.

CURRENT ACTIVITIES

Company efforts are focused on business planning and product strategy together with putting the building blocks in place for commercial launch. Initial customer feedback has been very positive and customers are already requesting to use the product.

□ KALOPTICS AND ANGLE

The creation of Kaloptics marks a further major extension of ANGLE's Progeny® process which is designed to help companies commercialise the value of their intellectual property. ANGLE itself is a category pioneer, leader and expert in technology wealth creation (TWC). Spanning the worlds of technology, finance and management, it applies this core expertise in three ways to:

- Enable companies to participate effectively in TWC (Management Services);
- Help firms decide how to optimise and progress the value of their engagement in TWC (Consulting); and finally, as with Kaloptics, to
- Deliver successful direct results from TWC (Ventures).

ANGLE is working closely with Kaloptics to ensure that technology, finance and management provide a fully-integrated – and robustly-tested – platform for the Company's development

